



PIX4D

Quick Start Checklist viDoc RTK rover & PIX4Dcatch



viDoc[®]




PIX4Dcatch

Project Name:	Date:
Location:	Operator:

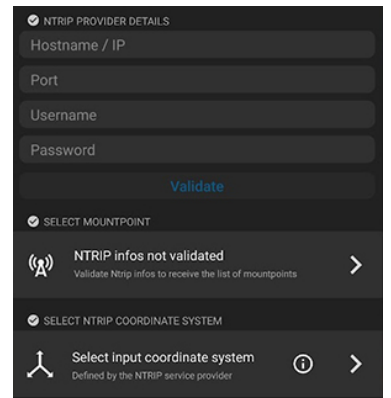
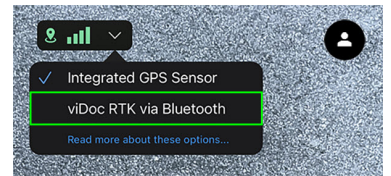
Preparation checklist:

- Charge viDoc and pack cables
- Survey pole or monopod
- Charge phone and pack cables
- Ensure the device has adequate storage space
- SP connect case for phone / tablet
- Ensure the app is updated to the latest version

Connect the viDoc RTK rover to begin capture:

- Remove unneeded apps in the background and be sure Bluetooth is on. Enabling “Do not disturb” functions can prevent project failure from incoming calls.
- Turn on the viDoc RTK Rover with a single long press. The green light on the rover indicates it is turned on.
- Start PIX4Dcatch. 
- Select the signal indicator in the top-left corner of the screen and select **viDoc RTK via Bluetooth**.
- Select the viDoc RTK rover under Available Bluetooth Devices. # _____
- Enter the NTRIP details and tap Validate:
 - Hostname / IP** _____
 - Port number** _____
 - Username** _____
 - Password** _____
- With an established connection, select a Mountpoint from the dropdown menu.

- Select the input coordinate system. _____
Same coordinate reference system NTRIP service uses to broadcast corrections
- Select **Connect**





Tilt the device

Fill the image frame with content you wish to reconstruct

- Employing a slight downward tilt is advised.
- Point the camera to capture near and far.
- Avoid moving objects including the shadow of the operator.
- Capture rich textures in good lighting.
- Track progress with live feedback on the covered area and the completeness of the scan.



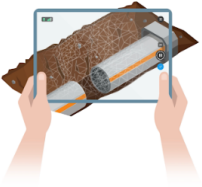
Move slowly



Move while turning

Move and turn Slowly

- Never change the orientation of the camera while standing still. e.g. turn in place.
- Avoid any sudden perspective changes / rapid or waving motions.
- Try to maintain a consistent distance between the camera and what it captures.
- Plan for smooth transitions around corners.
- It is better to raise or lower the camera height when trying to capture further detail in higher or lower regions than it is to point the camera up/down from the same height.



Plan

- Identify areas that may have limited visibility due to scene geometry.
- Plan the image collection with consideration to lighting.
- Consider potential locations for manual tie points and ground control points. Distribute accordingly.
- In difficult terrain, a practice run can help.



Outdoor scenes

Loss of Accuracy / Reception

- If RTK Fixed is lost, move slowly and deliberately to a point where RTK Fixed returns. Whenever possible, avoid overhead obstructions. PIX4Dcatch can adjust for the reduced reception once RTK Fixed returns.

